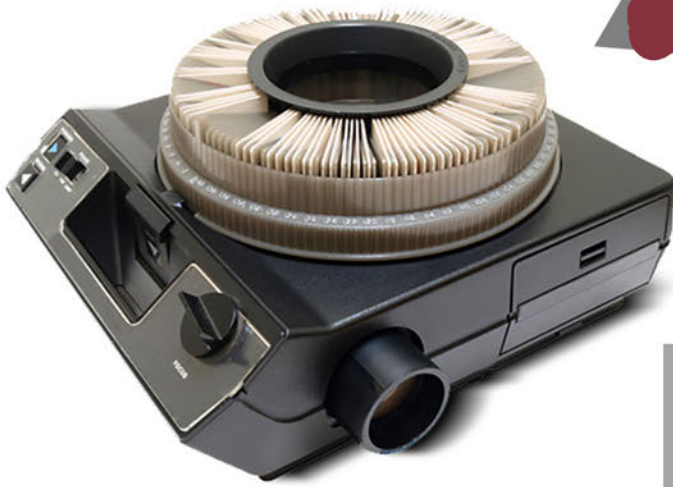


EQ 000194

# Kodak Slide Projector



*The CAROUSEL 4600 Projectors  
share the following basic features:*

*LONG LAMP-LIFE Lamp Module*

*1000 lumen with FHS lamp*

*Accepts 2 x 2 inch slides in standard 80 and 140 circular trays*

*Gentle gravity feed of slides*

*Forward and reverse at control panel and with remote control*

*Manual focus at control panel*

*Three-position lamp operation (OFF, FAN, LAMP)*

*Accepts rack-mount style lenses*

*Built-in reading light*

*Built-in carry handle*

*Easy access to lamp module for quick lamp changes*

*Safety thermal cut-off fuses prevents overheating*

*Dark screen shutter eliminates light on screen when no slide*

*Quick-release elevating foot (up to 16 degrees elevation)*

*Rear leveling adjustment foot*

*Slide tray removal with power off*

*To check out this item contact  
the ESU 11 Media Department  
[media@esu11.org](mailto:media@esu11.org)  
308-995-6585*

